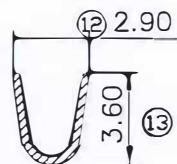
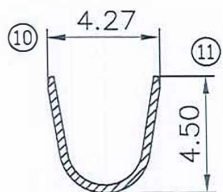
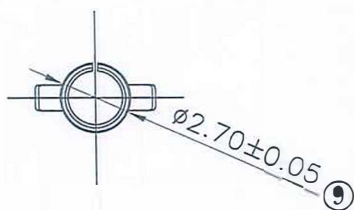
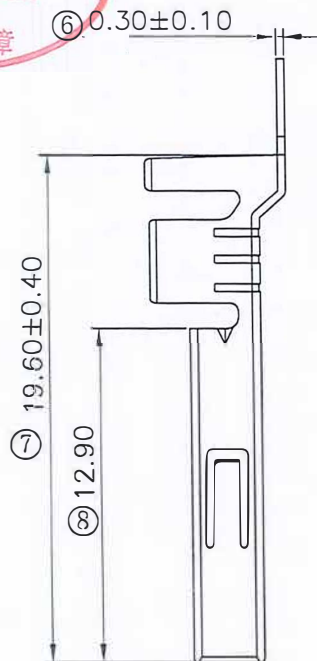
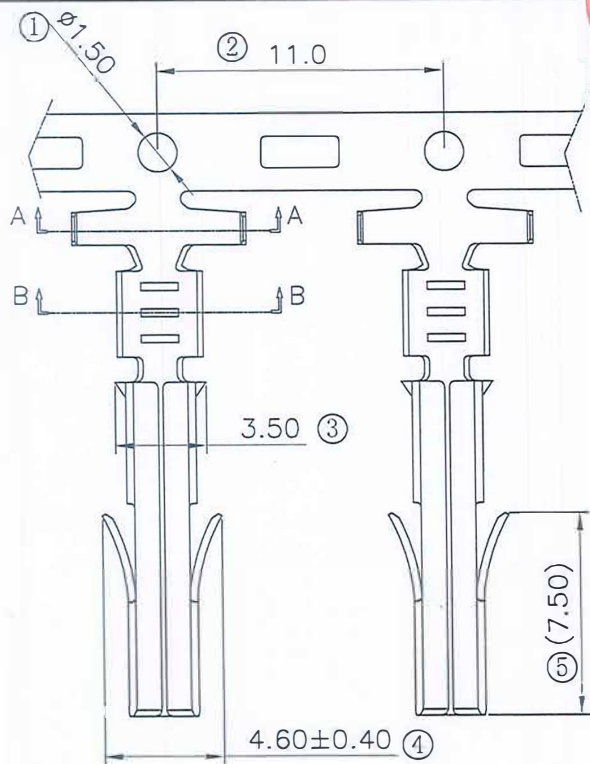


The product using material and processing must conform to the "WL-PZ-001"HSF technical standard control requirements



RoHS



NOTE:

- 1.MATERIAL SPECIFICATION:
1-1.TERMINAL: BRASS
 - 2.PLATING SPECIFICATION:
2-1.TERMINAL:
TIN/GOLD FLASH PLATED OVER ALL.
 - 3.ELECTRICAL PERFORMANCE:
3-1.CURRENT RATING: 15A
RATED VOLTAGE : 600V
3-2.CONTACT RESISTANCE: 3.5 mΩ MAX
3-3.INSULATION RESISTANCE: 1000MΩ Min
3-4.DIELECTRIC WITHSTANDING : 5000V AC
 - 4.ENVIRONMENTAL PERFORMANCE:
4-1.OPERATING TEMPERATURE: -25°C~+85°C.
 - 5.PACKAGE SPEC : REEL
 - 6.P/N: C6351 T 1 F X-X
- SERIES NO: _____ PLATING:
C-BRIGHT TIN
- CONNECTOR: _____
T-TERMINAL
- TYPE CODE _____
- MALE FEMALE: _____ METAL:
F-FEMALE B-BRASS

Ordering Information & Specifications

Part No	Wire Range	Qty/reel
C6351T1FX-X	AWG20#-16#	4000PCS

REV.	REVISION RECORD	DATE	GENERAL TOLERANCES		SCALE:	NAME	DATE	PART.NO:	DWG.NO:		
A0	NEW RELEASE	21.11.17	LINEAR	ANGLES	1:1	HUANG JUAN	23.12.08	C6351T1FX-X	ENDE05		
A1	DIMENSIONS CHANGE	23.12.05	0.0±0.35	X'REF±6'	APPROVED						
A2	IN KIND BASIS CHANGE DRAWINGS	23.12.08	0.00±0.25	X'±3'	DESIGNER	23.12.8					
			0.000±0.10	X'X' ±2'	DRAWN	23.12.08					
			UNIT:mm		TITLE:			Pitch 6.35mm MX FEMALE 端子 AWG20#-16#		REV: A2	SHEET: 1/1